

Bafl-Sorb[®] Sound Absorbing Ceiling Baffles

INC offers a complete line of Sound Absorbing Ceiling Baffles to compliment any environment. Our ceiling baffles are among the most cost-effective method of adding sound absorption to any space for dramatic improvements in overall room acoustics by reducing reverberation time and eliminating sound reflections from the ceiling. Baffles can be installed in rows, egg-crate or other patterns for optimal distribution and appearance.

Large spaces such as factory areas, gymnasiums, atriums, multi-purpose rooms and pools typically benefit the most from the installation of a Bafl-Sorb[®] system.



We offer a wide variety of styles, materials of construction, colors and sizes to meet just about any desired performance, budget and interior design. Most styles meet ASTM-E84 Class I fire ratings with FDA and Clean Room versions available.



401 Airport Road • North Aurora, IL 60542
800-954-1998

www.industrialnoisecontrol.com

Bafl-Sorb[®] Sound Absorbing Ceiling Baffles

Type "G" Standard Economy Vinyl Baffles

Semi-rigid low to medium density fiberglass acoustical core heat sealed into a fire retardant, 2 mil *smooth* vinyl casing with light reflective finish. Baffle maintains it's clean look, is waterproof and resistant to UV exposure.

- Available in 24" x 48" x 1.5" thick units
- Selected range of ASTM E-84 Class I fire rated vinyl to choose from, white color only
- Secure hanging grommets with wire hangers for easy installation



Our most economical baffle especially suited for industrial applications, gymnasiums, warehouses.



Type "E" Quality Embossed Vinyl Baffles

Semi-rigid medium density fiberglass acoustical core heat sealed into a fire retardant, 3 mil *embossed* vinyl casing with a matt finish. Baffle resists wrinkling and deformation over time retaining it's clean, sleek look and is waterproof and resistant to UV exposure.

- Available in 24" x 48" x 1.5" thick units
- Selected range of ASTM E-84 Class I fire rated vinyl to choose from, white and custom colors
- Secure hanging grommets with wire hangers for easy installation



Cost-effective still, but heavy duty and attractive especially suited for high ceiling environments such as multi-purpose rooms, pools, factory areas. Custom colors available!



Available Colors



Bafl-Sorb[®] Sound Absorbing Ceiling Baffles

Type SG: Sorba-Glas[®] Quilted Baffles

These super-tough ASTM E-84 "Class I fire-rated fiberglass baffles have a quilted vinyl facing that is impervious to moisture, oils, grease, dirt, dust and airborne contaminants. The 2" thick Sorba-Glas[®] baffle panels are completely sealed ... factory sewn on all four edges.

- Standard size is 24" x 48", Available in sizes up to 48" x 300"
- Available in 1" (Model 24SG1) and 2" (Model 24SG2) thicknesses
- Available in gray, white, black and tan colors
- Secure hanging grommets with S hooks for easy installation



The best choice where rugged durability in a harsh environment is needed. Our SG baffles are tough and last a lifetime.



Bafl-Sorb[®] Sound Absorbing Ceiling Baffles

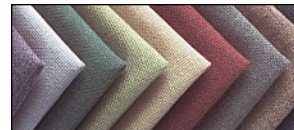
Type CLS: Premium Fabric “Soft” Baffles

Semi-rigid 3LB density fiberglass acoustical core sewn into a high quality fabric casing. Baffle resists wrinkling and deformation over time retaining it's clean, decorative look.

- Standard size is 24" x 48" x 2" thick, Available in sizes up to 48" x 96"
- Wide range of ASTM E-84 Class I fire rated, acoustically matched fabrics to choose from
- Secure hanging grommets with “S” hooks for easy installation



Attractive sewn fabric casing available in many colors is a great choice for commercial spaces, office interiors, and open space plans where a soft look is preferred.



Available Colors

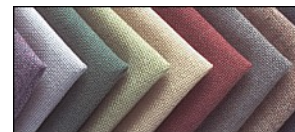
Type CLR: Premium Fabric “Rigid” Baffles

Rigid 6LB density fiberglass acoustical core covered with a high quality fabric casing stretched and glued to core. Baffle will not wrinkle or deform over time retaining it's clean, decorative look.

- Standard size is 24" x 48" x 2" thick, Available in sizes up to 48" x 96"
- Wide range of ASTM E-84 Class I fire rated, acoustically matched fabrics to choose from
- Secure hanging grommets with cable loops for easy installation



Sharp corners and tailored looks make this rigid baffle an attractive choice for controlling noise in atriums, churches, or any space where a trim finish is desired.



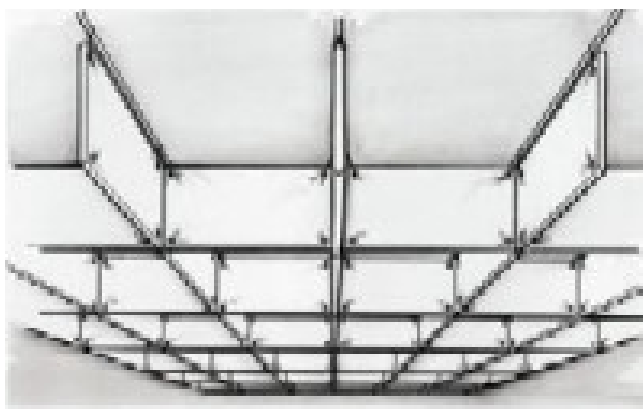
Available Colors



Bafl-Sorb[®] Sound Absorbing Ceiling Baffles

Installation Hardware & Guidelines

INC Bafl-Sorb[®] baffles install quickly and easily in almost any facility. You can arrange the baffles in almost any pattern without compromising the acoustical performance so long as the baffles are evenly disbursed throughout the area to be treated, generally in a density one baffle for every 10 to 15 square feet of ceiling area. The most common arrangements are either a grid or “egg-crate” pattern, or simply a straight row pattern. Typically, baffles are installed above any existing lighting and sprinkler systems by simply stringing non-stretch galvanized steel aircraft cables perpendicular to your ceiling support bar joists, trusses, or beams using a series of turnbuckles, clips and hooks (all available from INC). The cable is fastened taught and the baffles are suspended from the cable using the included hanging wires attached to the grommets in the baffles.



All of the Hardware and Tools required for the installation of any Bafl-Sorb[®] system are available from INC !



401 Airport Road • North Aurora, IL 60542
800-954-1998
www.industrialnoisecontrol.com

Bafl-Sorb® Sound Absorbing Ceiling Baffles

PRODUCT SPECIFICATIONS AND ACOUSTICAL DATA

INC Baffle Style			Acoustical Characteristics - Frequency (Hz)													
			Noise Reduction Coefficient							Absorption in Sabins						
Type	Core	Casing	125	250	500	1000	2000	4000	NRC	125	250	500	1000	2000	4000	Total
24G	1.55 ft³	2 mil Vinyl	0.32	0.57	1.09	1.53	1.33	0.92	1.13	2.52	4.58	8.75	12.24	10.70	7.33	9.07
27G	2.70 ft³	2 mil Vinyl	0.34	0.63	1.21	1.65	1.49	1.03	1.24	2.77	5.04	9.68	13.22	11.95	8.26	9.97
27E	2.70 ft³	3 mil Vinyl	0.45	0.55	1.22	1.47	0.87	0.41	1.03	3.58	4.40	9.81	11.79	6.99	3.31	8.25
24SG1	2.00 ft³	Quilt	0.39	0.59	0.87	0.84	0.73	0.59	0.75	3.25	4.91	7.24	6.99	6.08	4.91	6.25
24SG2	2.00 ft³	Quilt	0.53	0.77	0.88	0.77	0.71	0.63	0.80	4.42	6.41	7.33	6.42	5.91	5.25	6.64
24CLS	2.70 ft³	Cloth	0.31	0.50	1.07	1.30	1.30	1.24	1.05	2.68	4.33	9.27	11.26	11.26	11.60	9.09
24CLR	6.00 ft³	Cloth	0.25	0.89	1.10	1.10	1.10	1.08	1.04	2.16	7.70	9.52	9.52	9.52	9.34	9.00

PRODUCT SPECIFICATIONS

General

Sound absorbing baffles shall be Bafl-Sorb® as manufactured by Industrial Noise Control, Inc, North Aurora, IL consisting of an inner sound absorbing core, completely encapsulated by the specified outer casing. All units shall be manufactured to be of consistent size, shape and appearance. Each unit shall have a minimum of two machine set, rolled rim #3 brass grommets to accept 16 gauge steel "S" hooks or wire hangers.

Sound Absorbing Core:

Inner Core shall be fiberglass of the specified density according to baffle style. Fiberglass shall be inert, mildew and vermin proof and of a consistent density and uniform thickness.

Outer Casing:

Outer casing shall completely encapsulate the inner core of each unit. All vinyl casings shall be sealed around the core on three sides using a thermal impulse sealer with 5/16" wide elements on both sides of the seal creating a sturdy, water and dust tight bond. Vinyl "G" casings shall have a smooth reflective finish. Vinyl "E" casings shall have an embossed matt finish. All cloth casings shall be machine sewn around the inner core using an internal double ship lap seam. Quilted casings shall be machine sewn on all edges with a matching trim piping.

Fire Rating:

All vinyl casing shall meet Class I Fire Rating per UL-723. All cloth and quilt casings shall meet Class I Fire Rating per ASTM E-84.



401 Airport Road • North Aurora, IL 60542
800-954-1998
www.industrialnoisecontrol.com