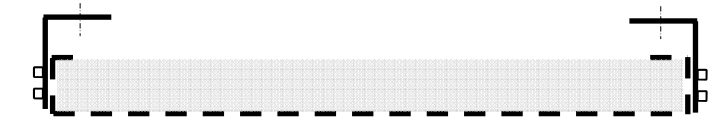


NOTES:


1. Panels are available using alternate gauge and / or material.
2. Mounting brackets are shipped loose. Fasteners to attach brackets to panel are included. Wall anchors are by the installer.
3. Standard panels are uncoated galvanealed steel. Several factory finish paint coatings are available including powder coating.
4. Optional encapsulation of panel acoustical fill available.
5. Panels meet ASTM E-84 Class I Fire Rating.



**ALTERNATE BRACKET CONFIGURATION
(CONCEALED ANCHORS)**

**VIEW "A"
STANDARD PANEL CONSTRUCTION**

STANDARD PANEL MODULE

	PRODUCT LINE: PanI-Sorb® Acoustical Wall Panels
	DETAIL: Panel Construction Model PSCM
Industrial Noise Control, Inc. 401 Airport Road • North Aurora, IL 60542 800-954-1998 • www.inc-noise.com	TECHNICAL BULLETIN NO.: 007-1001-002